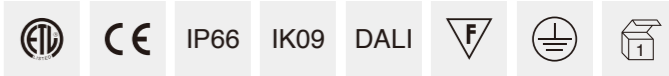




简述 Description



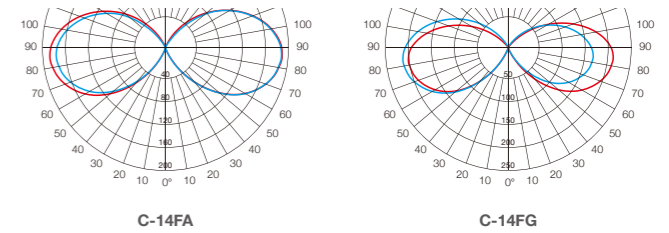
- 铝压铸盖帽，铝合金拉伸灯体，可根据需要截取不同高度
- 高透明PC扩散罩，能有效防止发黄老化
- 灯具采用间接投射发光模式，具有很好的视觉舒适性
- 高性能LED芯片，驱动有0-10V / DALI / 编程电源选择
- 防紫外线聚氨酯塑粉喷涂表面，耐腐蚀可以达1000小时以上
- 灯具表面最高温度不超过50度，安全可靠

- Aluminum die casting cover, extruded aluminum body, it can be cut different height.
- High transparent PC diffuser, it can effectively prevent yellowing and aging.
- Indirect light luminaire for use with led, which has high visual comfortable.
- High quality LED chips, Driver with 0-10V/DALI/programmed options.
- Surface anti-ultraviolet pure polyester powder painting.
- The maximum surface temperature of all accessible part under 50 degrees.

其他功能选项: 移动感应功能 / 应急功能 / 双色温切换功能

Other Options: Move sensor options / Emergency options / Colour temperature options

配光曲线 Photometric Data



C-14FA
12W

C-14FG
25W

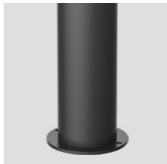
技术参数 Technology data

Code	Power	LED Qty	Input Voltage	Packing Size	Weight
LED chips - 2835					
C-14FALED12-144H80	12W	144	100V-240V	185*185*820	5.1
C-14FALED12-144H100	12W	144	100V-240V	185*185*1020	5.8
LED chips - 2835					
C-14FGLED25-144H80	25W	144	100V-240V	185*185*820	5.1
C-14FGLED25-144H100	25W	144	100V-240V	185*185*1020	5.8

可选配件 Accessories options

	Code
Q-02H防水连接器 Terminal Box	320000698
基础预埋件 Anchor Bolts	250000378
基础锚 Anchor	250000379

延伸产品 More in family



C-14FA-A / C-14FG-A
With Flange Version.

